

		1	2	3	4	5	6
重点 校对项	项目						
	库						
	文件名						
1. 版面尺寸	A						
2. 材质标注	B						
3. 物料编码	B						
4. 颜色标注	B						
5. 客户型号	C						
6. 产品名称	C						
7. 重量标注	D						
8. 电压功率	D						
9. 说明书装订要求	D						
10. 警语/认证标志高度	E						
11. 档位、控制面板一致性	F						
		<div><div><div>PELONIS</div><div>TOWER FAN</div><div>FZ10-24MR</div><div><p>Warning Notice: Before using this product, please read this manual carefully and keep it for future reference. For additional support, please call customer service at 1-866-546-4332.</p><p>The design and specifications are subject to change without prior notice for product improvement. Consult with your dealer or the manufacturer for details.</p></div></div><div><div>OWNER'S MANUAL</div><div></div><div>FZ10-24MR pelonis.com</div></div></div>					
		技术要求(版本号:B, 2020-01)					
		1. 备注[70P以下为钉装, 70P以上为胶装(特殊要求除外)]					
		2. 说明书警语及认证标志应满足CE/UL标准, CE: 警语部分大写字母高度不低于3mm, CE标志不低于5mm, WEEE标志不低于7mm; UL: 大写字母字高不小于1/12" (2.11mm), 小写字母字高不小于1/16" (1.6mm), "IMPORTANT SAFEGUARDS", "SAVE THESE INSTRUCTIONS" 等词, 其字高不小于3/16" (4.8mm), IMPORTANT SAFEGUARDS 必须在最前面。					
		3. 产品应符合QMG-J53. 021《产品说明书技术条件》的有关要求。					
		4. 有ROHS指令要求的物料应符合美的企业标准QML-J11. 006《产品中限制使用有害物质的技术标准》。					
		电风扇				FZ10-24MR_SMS-01	
		说明书					
H	标记	处数	更改文件号	签字	日期		
	制图	颜雅丽	审核	李艳	图样标记	重量	比例
	设计	颜雅丽	标准化	古广君	K		1:1
	校对	陈梓健	审定	古广君			
	会签	吴孔升	日期	2023-11-28	共 1 页	第 1 页	 广东美的生活电器制造有限公司
1	2	3	4	5	6		

PELONIS

EN

OWNER'S MANUAL

TOWER FAN

FZ10-24MR



Warning Notice: Before using this product, please read this manual carefully and keep it for future reference. For additional support, please call customer service at 1-866-646-4332.

The design and specifications are subject to change without prior notice for product improvement. Consult with your dealer or the manufacturer for details.

FZ10-24MR
pelonis.com

OWNER'S MANUAL

SAFETY PRECAUTIONS	1
IMPORTANT INSTRUCTIONS	2
PART NAMES	5
SPECIFICATIONS	5
HOW TO ASSEMBLE	6
OPERATING INSTRUCTIONS	8
LED DISPLAY	10
AUTOMATIC SHUTDOWN FUNCTION	10
REMOTE CONTROL	11
CLEANING MAINTENANCE	12
TROUBLESHOOTING	12
USER SERVICING INSTRUCTIONS	13

Read This Manual

Inside you'll find many helpful hints on how to use and maintain your appliance properly. Just a little preventive care on your part can save you a great deal of time and money over the life of your appliance. You'll find many answers to common problems in the troubleshooting tips - you should be able to fix most of them quickly before calling service. These instructions may not cover every possible condition of use, so attention to safety details is required when operating and maintaining this product.

SAFETY PRECAUTIONS

To prevent injury to the user or other people and property damage, the instructions shown here must be followed. Incorrect operation due to ignoring of instructions may cause harm or damage. The different levels of risk are shown by the following indications.



WARNING

This symbol indicates a hazardous situation which, if not avoided, could result in death or serious injury.



CAUTION

This symbol indicates a hazardous situation, which, if not avoided, could result in minor or moderate injury.

NOTICE

This symbol addresses practices not related to physical injury.

IMPORTANT INSTRUCTIONS

READ AND SAVE THESE INSTRUCTIONS

CAUTION

1. This appliance is not intended for use by persons (including children) with reduced physical, sensory or mental capabilities, or lack of experience and knowledge, unless they have been given supervision or instruction concerning use of the appliance by a person responsible for their safety. Children should be supervised to ensure that they do not play with the appliance.
2. Never insert fingers, pencils, or any other object through the grille when the fan is running.
3. If the supply cord is damaged, it must be replaced by manufacturer or its service agent or a similarly qualified person in order to avoid a hazard.
4. Disconnect the fan when moving it from one location to another.
5. Be sure the fan is on a stable surface when operating to avoid overturning.
6. Do not use the fan by window. For rain may create electrical hazard.
7. When the fan was assembled, the rotor blade guard shall not be taken off anymore.
 - Unplug the fan for prior cleaning.
 - The rotor guard shall not be disassembled/opened to clean the rotor blades.
 - Wipe the fan enclosure and rotor blade guard with a slightly damp cloth.

IMPORTANT INSTRUCTIONS (cont.)

WARNING

1. If the supply cord is damaged, it must be replaced by manufacturer or its service agent or a similarly qualified person in order to avoid a hazard.
2. To protect against the risk of electrical shock, do not immerse the unit, cord or plug in water or other liquid.
3. When the appliance is not in use and before cleaning, unplug the appliance from the outlet.
4. This appliance has a polarized plug (one blade is wider than the other). To reduce the risk of electric shock, this plug is intended to fit in a polarized outlet only one way. If the plug does not fit fully in the outlet, reverse the plug. If it still does not fit, contact a qualified electrician. Do not attempt to defeat this safety feature.
5. **WARNING**—To reduce the risk of fire or electric shock, do not use this fan with any solid-state speed control device.
6. This product employs overload protection (fuse). A blown fuse indicates an overload or short-circuit situation. If the fuse blows, unplug the product from the outlet. Replace the fuse as per the user servicing instructions (follow product marking for proper fuse rating) and check the product. If the replacement fuse blows, a short-circuit may be present and the product should be discarded or returned to an authorized service facility for examination and/or repair.

IMPORTANT INSTRUCTIONS (cont.)

WARNING

a) “Do not operate any fan with a damaged cord or plug. Discard fan or return to an authorized service facility for examination and/or repair.”

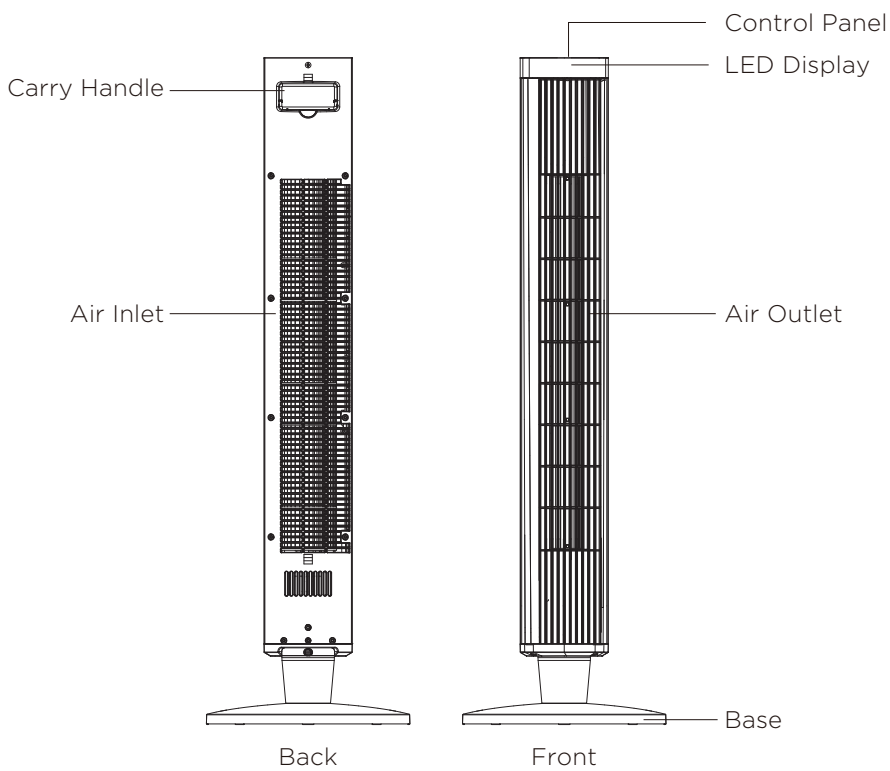
b) “Do not run cord under carpeting. Do not cover cord with throw rugs, runners, or similar coverings. Do not route cord under furniture or appliances. Arrange cord away from traffic area and where it will not be tripped over.”

7. Do not leave the fan running unattended.

8. To Reduce The Risk Of Fire, Electric Shock Or Injury To Persons, Do Not Use Replacement Parts That Have Not Been Recommended By The Manufacturer (e.g. Parts Made At Home Using A 3D Printer).

9. Please note that any changes or modifications of this product not expressly approved by the party responsible for compliance could void the user's authority to operate the equipment.

PART NAMES



NOTICE

All the pictures in this manual are for explanation purposes only. Any discrepancy between the real object and the illustration in the drawing shall be subject to the real model.

SPECIFICATIONS

MODEL	Voltage	Frequency	Power
FZ10-24MR	120V~	60Hz	45W

HOW TO ASSEMBLE

NOTICE

Please place the machine on the packing foam or other soft surfaces and invert it to avoid scratching a mark when install the base.

1. Take out the two parts of the pole from packing box. Assemble two parts A and B of pole together as Fig 1.

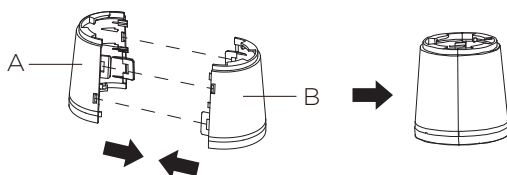


Fig 1

2. Position the bigger end of pole at the bottom of tower fan body into the groove, turn the pole counterclockwise until there is click voice as Fig 2.

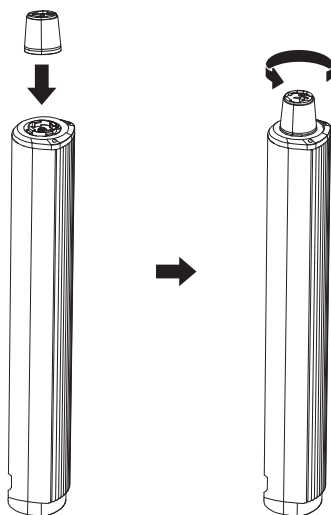


Fig 2

HOW TO ASSEMBLE

3. Take out the two parts of base from packing box. Insert the two poles of part C into two holes of part D, and insert the two poles of part D into two holes of part C to assemble the base as Fig 3.

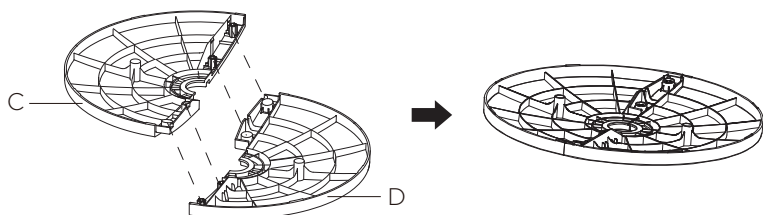


Fig 3

4. Position base to the smaller end of pole, turn the base counterclockwise until hearing a click voice and boundary of pole align with boundary of base as Fig 4.

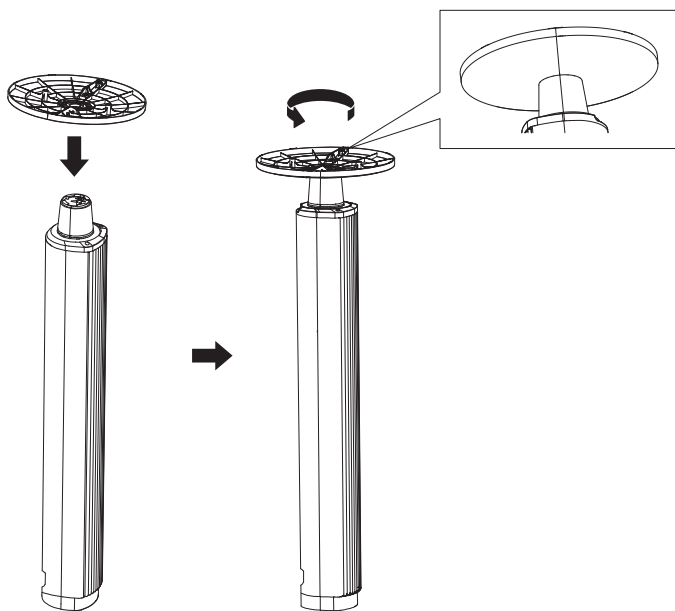
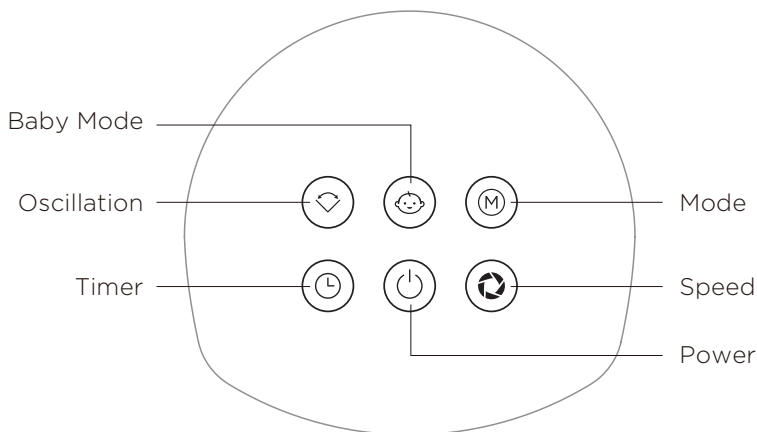


Fig 4

OPERATING INSTRUCTIONS



Please place the fan on a stable, flat surface. Plug the cord set into a 120V-electrical outlet, then listen for a “beep” sound to confirm that the fan has been successfully connected to the power supply.

POWER

Touch the “POWER” key to turn on the fan in normal mode, and the LED display will indicate the wind speeds. Touch it again to turn the fan off.

SPEED

When the fan is running, touch the “SPEED” key repeatedly to select different speeds.

MODE

Tap the “MODE” key repeatedly to cycle through “Normal - Sleep - Natural - Baby ”. The lights will indicate the chosen mode.

-NORMAL MODE

In normal mode, choose from 6 wind speeds (1 to 6 from low to high). The fan will run continuously at the selected speed, and the wind speed will not switch automatically.

OPERATING INSTRUCTIONS

-NATURAL MODE

The natural mode offers 6 wind speeds (1, 2, 3, 4, 5, 6). In natural mode, the fan will automatically cycle through different circulations based on the wind speed you select.

-SLEEP MODE

Sleep mode offers 6 wind speeds (1, 2, 3, 4, 5, 6). When in sleep mode, the fan will gradually decrease speed every 30 minutes until it reaches speed 1, providing a comfortable airflow during sleep.

-BABY MODE

Designed for babies, this mode offers 3 wind speeds (1, 2, 3) with gentle airflow. Choose the desired wind speed based on the situation.

OSCILLATION

Touch the "OSC" key to start oscillating the fan, the oscillation symbol will be displayed on the LED panel. Touching it again to stop the fan at the desired direction.

TIMER

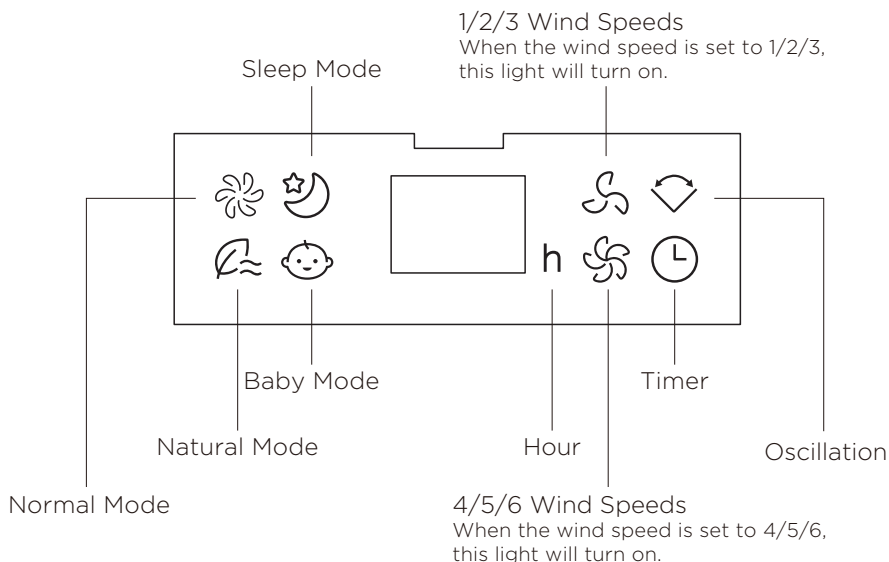
The fan is running, touch the "TIMER" key and set the timer to turn off the fan automatically.

Touch it continuously to select time from 1 to 24 hours with an increment of 1 hour (The corresponding time-lights on the LED panel will light up). The fan will automatically turn off after the set hours.

(PS: To cancel the timer setting, press the timer key to 0.)

LED DISPLAY

The display will automatically turn off after 30 seconds of no operation, the display will light up again once any key is touched.



Turn off the fan without unplugging the power supply, it will resume operation in the mode it was in before when turn on again (Except the timer function).

NOTICE

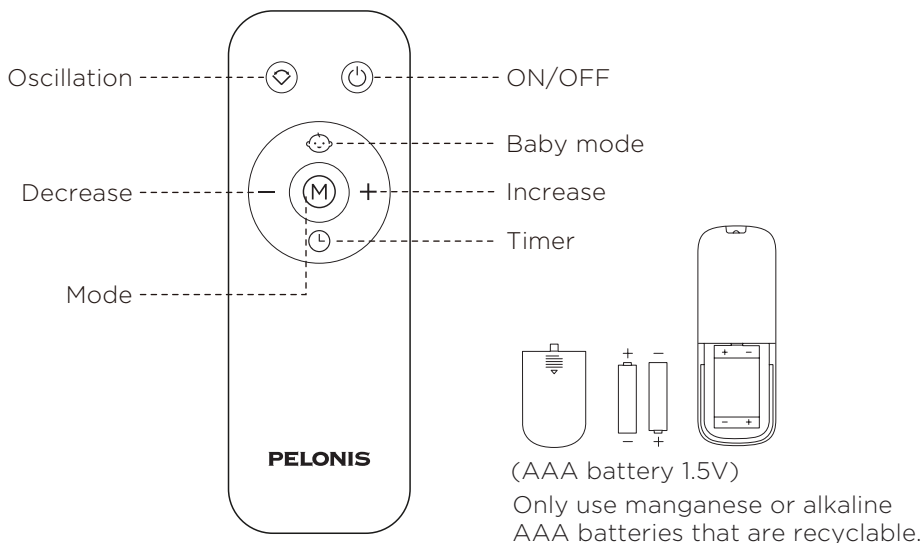
- Turn off the fan without unplugging the power supply, it will resume operation in the mode it was in before when turn on again (Except the timer function).
- If the fan is unplugged and then plugged in again, it will turn on in the default setting: third speed in normal mode.

AUTOMATIC SHUTDOWN FUNCTION

After start-up, the system will automatically shut down after 24 hours of inactivity.

REMOTE CONTROL

- The buttons on the remote controller such as OSCILLATION, ON/OFF, BABY, DECREASE or INCREASE, TIMER, MODE, have identical functions to their corresponding keys on the unit.
- The remote control operate effectively within 16 feet in the front of the product and within an angle of 30°.
- The battery contains heavy metals, acid and alkali substances, which threaten human health; waste batteries should be sorted and recycled.



⚠ WARNING

- Use standard or alkaline batteries of type “AAA”. DO NOT use rechargeable batteries.
- Do not mix new batteries with old.
- Do not mix alkaline, standard (carbon-zinc) or rechargeable (ni-cad, ni-mh, etc.) batteries.

CLEANING MAINTENANCE

- Be sure to unplug from the electrical supply source before cleaning.
- Please use a damp cloth or sponge for general cleaning.
- To remove more persistent dirt with a cloth that dampened with warm soapy water, and thoroughly to remove soap film with a damp cloth. Do not use any solvents (such as thinners), as these may damage the plastic casing.
- Be sure not to make water or other liquid enter inside of the motor.

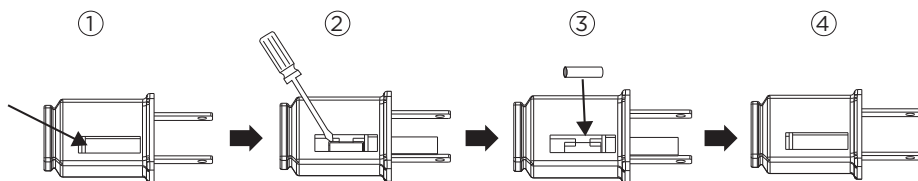
TROUBLESHOOTING

If the product does not operate or does not operate properly, first check according to the following list. If the reason the product does not operate or does not operate properly is not included in the following list, the product may have failed. At this time, it is recommended to send the product to the dealer for repair.

Problem	Solution
The tower fan does not turn on	<ul style="list-style-type: none">• Check whether the power outlet switch has been turned on.• Check whether the plug is connected to the power outlet.
The remote control doesn't work	<ul style="list-style-type: none">• Check the battery state of the remote control and, if required, replace batteries with new ones.• Check that the remote control is being used within 16 feet of the unit.
Air flow is restricted	<ul style="list-style-type: none">• Check whether the fan blades are dirty.• Check whether the vents are clogged. You can remove any dirt and unclog vents with a dry cloth.
The buttons on the control panel or the remote control don't work	<ul style="list-style-type: none">• Check whether the buttons are stuck.• Clean the buttons with a damp cloth.
The tower cooling fan does not oscillate.	<ul style="list-style-type: none">• Check that there are no obstructions to the unit. If you have any further issues, contact After Sales Support.

USER SERVICING INSTRUCTIONS

- a) Grasp plug and remove from the receptacle or other outlet device. Do not unplug by pulling on cord.
- b) Open fuse cover. Slide open fuse access cover on top of attachment plug towards blades. (Fig. ①)
- c) Remove fuse carefully. Insert the tip of your tool into fuse slot (close with the terminal), then pry the fuse gradually and slowly, but do not overexert. If you feel resistance, you can try it at several times and pry the fuse little by little. When one side of the fuse has been released, then you can get the fuse out entirely. (Fig. ②)
- d) Risk of fire (fix spacing). Replace fuse only with 2.5 Amp, 125 Volt fuse. (Fig. ③)
- e) Close fuse cover. Slide closed the fuse access cover on top of attachment plug. (Fig. ④)
- f) Risk of fire (fix spacing). Do not replace attachment plug. Contains a safety device (fuse) that should not be removed. Discard product if the attachment plug is damaged.
- g) If the fan suddenly does not work during normal operation, please check whether it is a problem with the fuse.



NOTICE

- When you replace the fuse, please don't operate suddenly or overexert, or else the product will be damaged or cause accident.
- When you feel it hard to be operated, please make sure you have got the right way.
- Risk of fire. Do not replace attachment plug. Contains a safety device (fuse) that should not be removed. Discard product if the attachment plug is damaged.

