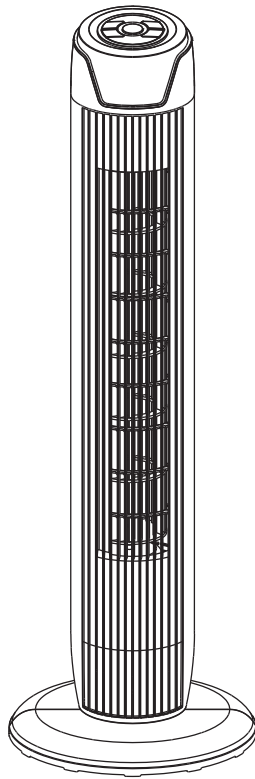


PELONIS

INSTRUCTION MANUAL

36" DIGITAL TOWER FAN

MODEL:FZ10-19JR



READ AND SAVE THESE INSTRUCTIONS

IMPORTANT SAFETY INSTRUCTIONS

CAUTION

Read Rules for Safe Operation and Instructions Carefully.

WARNING

1. This appliance has a polarized plug (one blade is wider than the other). To reduce the risk of electric shock, this plug is intended to fit in a polarized outlet only one way. If plug does not fit fully in the outlet, reverse the plug. If it still does not fit, contact a qualified electrician. Do not attempt to defeat this safety feature.
2. To reduce the risk of fire or electric shock, DO NOT use this fan with any solid-state speed control devices.
3. To Reduce The Risk Of Fire, Electric Shock Or Injury To Persons, Do Not Use Replacement Parts That Have Not Been Recommended By The Manufacturer (e.g. Parts Made At Home Using A 3D Printer).

READ AND SAVE THESE INSTRUCTIONS

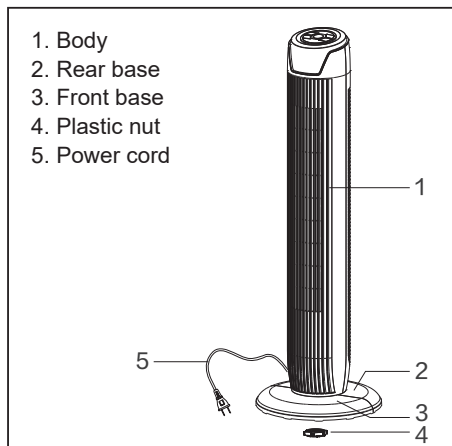
RULES FOR SAFE OPERATION

1. Never insert fingers, pencils, or any other object through the grille when fan is running.
2. Disconnect fan when moving from one location to another.
3. Be sure fan is on a stable surface when operating to avoid overturning.
4. Do not use fan in window. Rain may create electrical hazard.
5. Ensure that the fan is switched off from the supply mains before removing the grille

The rules about cord and plug as below:

1. This product employs overload protection (fuse). A blown fuse indicates an overload or short-circuit situation. If the fuse blows, unplug the product from the outlet. Replace the fuse as per the user servicing instructions (follow product marking for proper fuse rating) and check the products. If the replacement fuse blows, a short-circuit may be present and the product should be discarded or returned to an authorized service facility for examination and/or repair.
2. Do not operate any fan with a damaged cord or plug. Discard fan or return to an authorized service facility for examination and/or repair.
3. Do not run cord under carpeting. Do not cover cord with throw rugs, runners, or similar coverings. Do not route cord under furniture or appliances. Arrange cord away from traffic area and where it will not be tripped over.

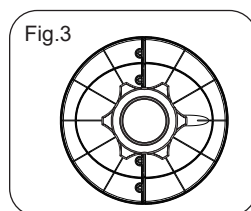
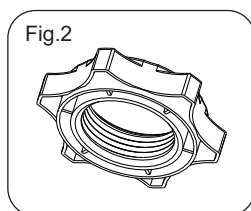
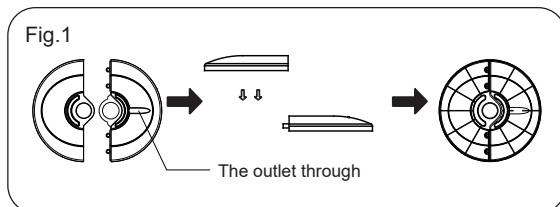
PART FIGURE



Note: All the pictures in this manual are for explanation purpose only. Any discrepancy between the real object and the illustration in the drawing shall be subject to the real subject.

ASSEMBLY INSTRUCTIONS

1. Take out the fan body and the spare parts from the box. Put the front base onto rear base and join them together. (See Fig. 1)
2. Unlock the plastic nut from the fan body.
3. Pass the power cord through the flute, then insert the fan body into the base. (See Fig. 3)
4. Fix the fan body on the base with the plastic nut. (See Fig. 2)



OPERATION INSTRUCTION

I. Remote Controller (Fig.4)

a. KEY INSTRUCTION

1. "⏻" ON/OFF KEY

After plug in, the fan will have a beep sound. Press this button to switch on the fan, and the fan will start working at the lowest speed of normal modes. Press this button again to switch off it.

2. "—" "+" SPEED KEY

When the fan started, press this key repeated, the fan will work with "L-M-H" circulatory

3. "Ⓜ" MODE KEY

Press this key to select mode. The sequence is normal(☼), natural(☁), and sleep(☾) when this key being touched repeatedly or continuously. The light indicate mode state.

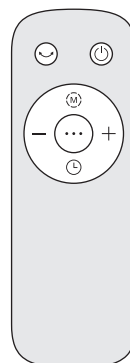


Fig.4

Normal mode: the fan runs constantly at the speed which have been selected.

Natural mode: the fan randomly cycles through speed settings like a nature breeze.

Sleep mode: If setting on H speed: the fan runs at H speed for (30±1 minutes) --Middle speed (30±1 minutes) -- finally at low speed;
If setting on M speed: runs at Middle speed (30±1 minutes) -- finally at low speed;

If setting on L speed: runs at low speed.

4. "☺" OSC/LOUVER KEY

After the fan has started, press this key to select oscillation mode. The lights on the display can indicate fan oscillation mode.

5. "⌚" TIMER KEY

Press this timer key repeatedly to set the time for air delivery. Increase in increments up to "1-2-3-4-5-6-7" hours.

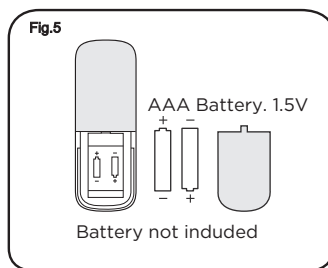
b. BATTERIES

(battery not included in the packaging)

1. Slide the battery compartment Cover.
2. Insert the batteries, and make sure that the batteries are placed as shown in the Fig.5.
3. Slide back the battery cover.

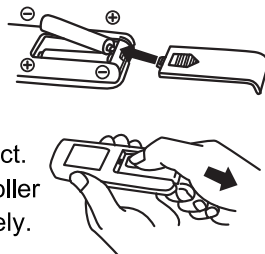
NOTES: Use size "AAA" manganese or alkaline batteries.

Do not use rechargeable batteries.



c. BATTERY WARNING AS BELOW

1. Do not dispose of batteries in fire, batteries may explode or leak.
2. Do not mix old and new batteries.
3. Do not mix alkaline, standard (carbon-zinc) or rechargeable (nickel-cadmium) batteries.
4. Non-rechargeable batteries are not to be recharged.
5. Batteries are to be inserted with the correct polarity.
6. Exhausted batteries are to be removed from the product.
7. The batteries must be removed from the remote controller before it is scrapped and that they are disposed of safely.



d. OVERHEAT PROTECTION OF THE MOTOR

The windings of the motor have a thermal-fuse that burns out and the fan switches off and temperature of the motor is no longer going up so that plastic parts of the fan don't subject to deformation so far so to be burned by the overheat if the motor is overheat for any unexpected reason.

II. Buttons on fan body / Panel indication (Fig.6)

The buttons on the body such as ON/OFF, SPEED, MODE, TIMER, OSCILLATION have the same functions as those of the corresponding keys on the remote controller.

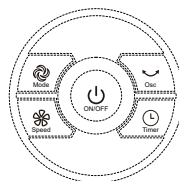
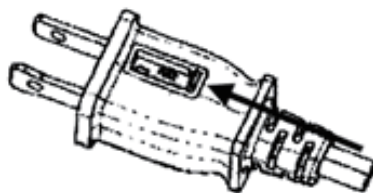


Fig.6

USER SERVICING INSTRUCTIONS

- Grasp plug and remove from the receptacle or other outlet device. Do not unplug by pulling on cord.
- Open fuse cover. Slide open fuse access cover on top of attachment plug towards blades.
- Remove fuse carefully. Insert the tip of your tool into fuse slot (close with the terminal), then prize the fuse gradually and slowly, but not overexert. If you feel tight, you can try it at several times and prize the fuse little by little. When one side of the fuse has been prized, then you can get the fuse out entirely.
- Risk of fire. Replace fuse only with 2.5 Amp, 125 Volt fuse.
- Close fuse cover. Slide closed the fuse access cover on top of attachment plug.
- Risk of fire. Do not replace attachment plug. Contains a safety device (fuse) that should not be removed. Discard product if the attachment plug is damaged.



Notice:

- When you replace the fuse, please don't operate suddenly or overexert, or else the product will be damage or cause accident.
- When you feel it hard to be operated, please make sure you have got the right way.

CLEANING

- Be sure to unplug from the electrical supply source before cleaning.
- Plastic parts should be cleaned with mild soap and a damp cloth or sponge. Thoroughly to remove soap film with clean water.
- Be sure not to make water or other liquid enter inside of motor.
- Dry all parts completely before reassembling and reconnecting to power source.

SERVICE & SUPPORT

In the event of a warranty claim or if service is required for this product, please contact us at the following:

Toll Free: 1-866-646-4332

For questions or comments, please write to:

Midea America Corp.

300 Kimball Drive,

Parsippany NJ 07054

For your records, staple your sales receipt to this manual and record the following:

DATE OF PURCHASE: _____

PLACE OF PURCHASE: _____

(STAPLE SALES RECEIPT HERE)

**NOTE: PROOF OF PURCHASE IS REQUIRED FOR ALL
WARRANTY CLAIMS**

ONE (1) YEAR LIMITED WARRANTY

- Please read all instructions before attempting to use this product.

Midea America Corp. warrants as limited herein to the original purchaser of retail that each new Fan, shall be free of defects in material and workmanship for a period of one (1) year from the date of delivery. This one (1) year warranty is limited to the Motor and Electric Element. The date of delivery establishes the warranty period, should service be required.

In the event of malfunctions or failure of your Fan, simply deliver or send the Fan, postage prepaid along with PROOF OF PURCHASE, within the warranty period of one (1) year, to Midea America Corp.. Midea America Corp. reserves the right to inspect the claimed defective part or parts to determine if the defect or malfunction complaint is covered by this warranty. Midea America Corp. shall, within sixty (60) days after receipt of the product, at its option, repair and/or replace the defective part or parts free of charge. This warranty shall only cover defect arising from normal usage. Midea America Corp. assumes no responsibility whatsoever if the Fan should fail during the warranty period by reason of:

- Misuse, negligence, physical damage or accidents.
- Lack of maintenance (see instructions for proper maintenance).
- Repair by any unauthorized party during the warranty period.
- Damage caused by connection to an improper input voltage (see specification label on your Fan).

Midea America Corp. makes no further warranties or representations, express or implied except those contained herein. No representative or dealer is authorized to assume any other liability regarding the Fan. The duration of the implied warranty granted under State law, including warranties of merchantability and fitness for particular purpose are limited in duration should the duration of the express warranty grant it hereunder. Midea America Corp. shall in no event be liable for direct, indirect, special or consequential damages.

Some states do not allow limitations on how long an implied warranty lasts, and/or the above limitations or exclusion may not apply to you. This warranty gives you specific legal rights and you may have other rights which vary from state to state.