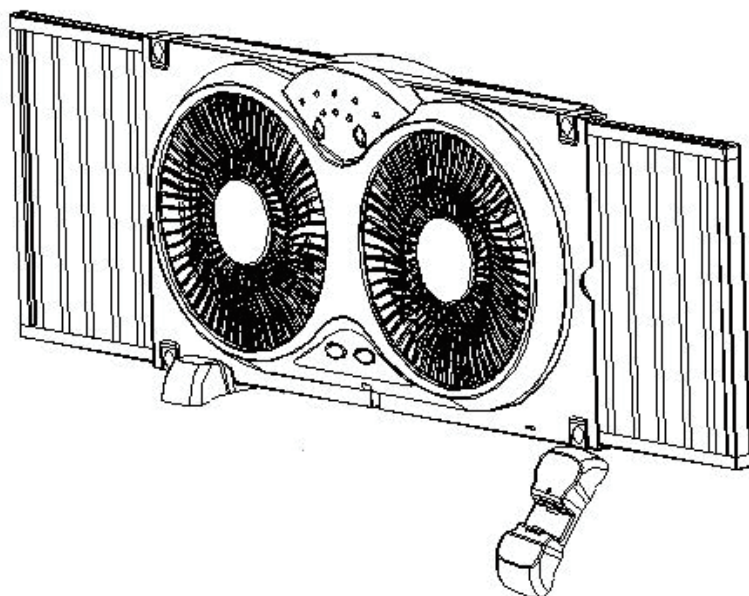


PELONIS

OWNER'S MANUAL

WINDOW FAN

MODEL:PSFW23D2WW



READ AND SAVE THESE INSTRUCTIONS

Attention: Pictures in the IM are for reference only.

IMPORTANT SAFETY INSTRUCTIONS

CAUTION

Read Rules for Safe Operation and Instructions Carefully.

WARNING

1. To reduce the risk of fire or electric shock, do not use this fan with any solid state speed control device.
2. This appliance has a polarized plug(one blade is wider than the other). To reduce the risk of electric shock, this plug is intended to fit fully in the outlet only one way. If plug does not fit fully in the outlet, reverse plug. If it is still does not fit, contact a qualified electrician. Do not attempt to defeat this safety feature.
3. Do not leave fan running unattended.
4. Fan is rated for use as a window fan. Please remove from window (unplugged) when raining.
5. Close supervision is necessary when any appliance is used by or near children.
6. Never insert fingers, pencils, or other foreign objects through the grille.
7. Disconnect fan when removing grilles for cleaning. Reinstall before plugging into power supply.
8. To protect against electrical shock, never immerse fan, cord or plug in water. Avoid using volatile cleaners.
9. Avoid contact with moving parts.
10. Do not operate in presence of volatile or explosive fumes.
11. Do not place fan or any parts near an open flame, cooking or other heating device.
12. Do not pull cord to disconnect, grip plug instead.
13. Do not hang or mount fan on a wall or ceiling.
14. Disconnect fan from power when moving from one location to another.
15. Be sure fan is on a stable surface when operating to avoid flipping over.
16. Do not use outdoors.
17. Never operate fan with damaged electrical cord, plug, or when the fan malfunctions. Avoid use of extension cords.
18. To avoid fire hazard, never place the cord under rugs or any part of an open flame, cooking, or heating appliance.
19. This product is intended for household use only and not for commercial or industrial applications.
20. Automatically Operated Device - To Reduce The Risk Of Injury Disconnect From Power Supply Before Servicing.
21. To reduce the risk of fire, electric shock or injury to persons, do not use replacement parts that have not been recommended by the manufacturer (e.g.parts made at home using a 3D printer).
22. The fan shall not be modified by user. such as by adding supplemental filters to fans not intended to be used for air cleaning purposes.

RULES FOR SAFE OPERATION

When using electrical appliances, basic precautions should always be followed to reduce the risk of fire, electric shock and injury to persons, including the following:

1. The rules about cord and plug as below:

(1) This product employs overload protection (fuse). A blown fuse indicates an overload or short-circuit situation. If the fuse blows, unplug the product from the outlet. Replace the fuse as per the user servicing instructions (follow product marking for proper fuse rating) and check the products. If the replacement fuse blows, a short-circuit may be present and the product should be discarded or returned to an authorized service facility for examination and/or repair.

(2) Do not operate any fan with a damaged cord or plug. Discard fan or return to an authorized service facility for examination and/or repair.

(3) Do not run cord under carpeting. Do not cover cord with throw rugs, runners, or similar coverings. Do not route cord under furniture or appliances. Arrange cord away from traffic area and where it will not be tripped over.

2. Never insert fingers, pencils, or any other object through the grille when fan is running.

3. Disconnect fan when moving from one location to another, before putting on or taking off parts.

4. Disconnect fan when removing grilles for cleaning.

5. Do not operate in the presence of explosive and/or flammable fumes.

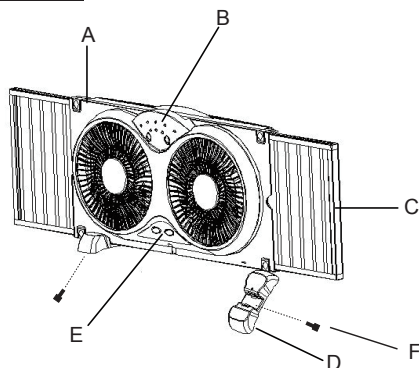
6. Do not place fan or any parts near an open flame, cooking or other heating appliance.

7. Always use on a dry, level surface, do not use outdoors.

8. Do not let the cord hang over the edge of a table, counter, or come in contact with hot surfaces.

9. To disconnect grip plug and pull from wall outlet. Never yank on cord.

PACKAGE CONTENTS



NOTE

The pictures contained in the Manual are for reference only, and please be subject to the physical product in the packing box.

Part	Description	Quantity
A	Fan body	1
B	Speed button	1
C	Expandable panels	2

Part	Description	Quantity
D	Feet	2
E	Right and Left intake/exhaust control lever	1
F	Screw	2

HARDWARE CONTENTS

Part	Description	Quantity	Picture (Shown to size)
AA	ST2.9x13 Screw	2	

FEET INSTALLATION INSTRUCTIONS

- Push the feet (B) into the fan body (A) and snap together. (Fig. 1). Fasten the two screws (D) from the bottom of the feet.
- This window fan has been designed to fit double-hung, slider and casement windows with minimum openings of 24.4 in. wide and 11.6 in. high. (Fig. 2)
- This fan is designed and recommended for use with your window screen in place.

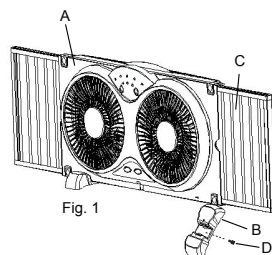


Fig. 1

FOR DOUBLE-HUNG TYPE WINDOWS (Fig.3)

1. With the window fully open, set the fan in the window with front (A) of fan facing the INSIDE.
2. Hold fan with one hand while adjusting panels (B) with the other. Before closing window, pull open locks (C) located at top and bottom on right/left side on fan, and adjust expandable panel, if necessary.
3. Close the window on top of the fan with the bottom edge of the window behind the lip of fan housing.

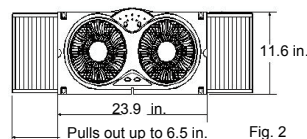


Fig. 2

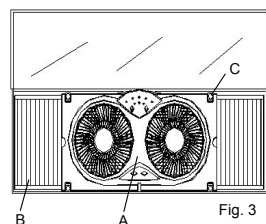


Fig. 3

4. If the fan still does not fit properly in the window, re-adjust the expandable panel on right/left side of fan to fill in remaining space between panel and window frame until a secure fit is achieved.

FOR VERTICAL SLIDER-TYPE WINDOWS (Fig.4)

1. Position the fan in the window with the power switch (A) facing the center of the opening.
2. To adjust height, remove fan from window, extend the expandable panel (B) until it matches the height of the window.
3. With the window fully open, position the fan in the window with power switch facing the center of the opening.
4. Fan must fit securely against the inside edge of the window opening.
5. Slide the sliding window to meet the edge of the fan.
6. Adjust the expandable panel (B) to fill in remaining space between fan and window frame. Expandable panel (B) locks into position by closing the locks (C) once you establish a fit.

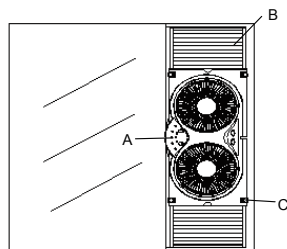
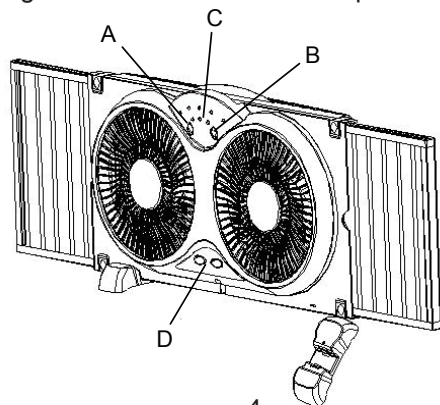


Fig. 4

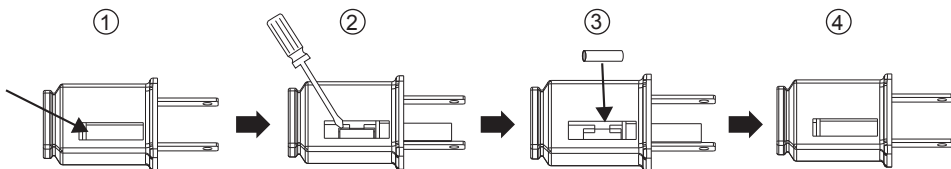
OPERATING INSTRUCTIONS

1. Plug the cord into any standard 120-volt A/C outlet.
2. To turn the fan on, press the SPEED button (A) on the panel. Fan will start at low speed.
3. Adjust speed to low, medium or high by pressing SPEED button. A light will turn on for each speed selected (C). Stop the fan by pressing the SPEED button successively.
4. To start and stop the temperature settings, press the TEMP button (B) to cycle through the temperature setting. Minimum setting is 60° F; maximum setting is 80° F. The fan will operate only if the temperature you have set is less than room temperature. A light will turn on indicating the selected temperature (C).
5. Set the individual fan motors on either IN (intake) or OUT (exhaust) using the control lever (D).
6. Temperature setting is available when the fan speed is set at High.



USER SERVICING INSTRUCTIONS

- a) Grasp plug and remove from the receptacle or other outlet device. Do not unplug by pulling on cord.
- b) Open fuse cover. Slide open fuse access cover on top of attachment plug towards blades.(Fig. ①)
- c) Remove fuse carefully. Insert the tip of your tool into fuse slot(close with the terminal), then pry the fuse gradually and slowly, but do not overexert. If you feel tight, you can try it at several times and pry the fuse little by little. When one side of the fuse has been pried, then you can get the fuse out entirely.(Fig. ②)
- d) Risk of fire. Replace fuse only with 2.5 Amp, 125 Volt fuse.(Fig. ③)
- e) Close fuse cover. Slide close the fuse access cover on top of attachment plug.(Fig. ④)
- f) Risk of fire. Do not replace attachment plug. Contains a safety device(fuse)that should not be removed. Discard product if the attachment plug is damaged.
- g) When the fan suddenly does not work during normal operation, please check whether it is a problem with the fuse.



Notice:

When you replace the fuse, please do not operate suddenly or overexert or else the product will become damaged or potentially cause an accident.

When you feel it hard to be operated, please check if you have used the fan in the right way.

MAINTENANCE INSTRUCTION

The fan requires little maintenance. Do not try to fix it by yourself.

1. Before cleaning and assembling, unplug the fan.
2. To ensure adequate air circulation to the motor, keep vents at the rear of the motor housing free of dust, debris, etc. Unplug fan before using a vacuum cleaner to clean these vents. Do not disassemble the fan motor to clean.
3. Plastic parts should be cleaned with mild soap and damp cloth or sponge. Thoroughly remove soap film with clean water. Do not use any abrasive detergent or solvents to avoid scratching the surface.

CLEANING

1. Be sure to unplug the power cord from the outlet before cleaning.
2. Plastic parts should be cleaned with mild soap and damp cloth or sponge. Thoroughly remove soap film with clean water.
3. Be sure not to get water or other liquid inside of the motor.
4. Dry all parts completely before reassembling and reconnecting to power source.

TROUBLE SHOOTING

Operation of your appliance can lead to errors and malfunctions. The following tables contain possible causes and notes for resolving an error message or malfunction. It is recommended to read the table below carefully in order to save your time and money that may cost for calling to the service center.

Problem	Cause	Solution
The fan will not operate.	<ul style="list-style-type: none">• The fan isn't plugged in and/or the electrical outlet isn't working properly.	Make sure the fan is plugged in and/or the electrical outlet is working properly.
The fan will not operate.	<ul style="list-style-type: none">• Obstructions are keeping the fan from working.	Check for obstructions. If you find an obstruction, turn the fan off. Unplug the fan and carefully remove the obstruction. Plug the fan in and turn it on again by referring to the operating instructions.

SERVICE & SUPPORT

In the event of a warranty claim, questions, comments or if service is required for this product, please contact us at the following:

Toll Free: 1-866-646-4332

For questions or comments, please write to:

Midea America Corp.

300 Kimball Drive
Parsippany, NJ 07054

For your records, staple your sales receipt to this manual and record the following:

DATE OF PURCHASE: _____

PLACE OF PURCHASE: _____

SERIAL NUMBER: _____

(STAPLE SALES RECEIPT HERE)

NOTE: PROOF OF PURCHASE IS REQUIRED FOR ALL
WARRANTY CLAIMS

PRINTED IN CHINA

ONE (1) YEAR LIMITED WARRANTY

- Please read all instructions before attempting to use this product.

Midea America Corp. warrants as limited herein to the original purchaser of retail that each new Fan, shall be free of defects in material and workmanship for a period of one (1) year from the date of delivery. This one (1) year warranty is limited to the Motor and Electric Element. The date of delivery establishes the warranty period, should service be required.

In the event of malfunctions or failure of your Fan, simply deliver or send the Fan, postage prepaid along with PROOF OF PURCHASE, within the warranty period of one (1) year, to Midea America Corp.. Midea America Corp. reserves the right to inspect the claimed defective part or parts to determine if the defect or malfunction complaint is covered by this warranty. Midea America Corp. shall, within sixty(60) days after receipt of the product, at its option, repair and/or replace the defective part or parts free of charge. This warranty shall only cover defect arising from normal usage. Midea America Corp. assumes no responsibility whatsoever if the Fan should fail during the warranty period by reason of:

- Misuse, negligence, physical damage or accidents.
- Lack of maintenance (see instructions for proper maintenance).
- Repair by any unauthorized party during the warranty period.
- Damage caused by connection to an improper input voltage (see specification label on your Fan).

Midea America Corp. makes no further warranties or representations, express or implied except those contained herein. No representative or dealer is authorized to assume any other liability regarding the Fan. The duration of the implied warranty granted under State law, including warranties of merchantability and fitness for particular purpose are limited in duration should the duration of the express warranty grant it hereunder. Midea America Corp. shall in no event be liable for direct, indirect, special or consequential damages.

Some states do not allow limitations on how long an implied warranty lasts, and/or the above limitations or exclusion may not apply to you. This warranty gives you specific legal rights and you may have other rights which vary from state to state.

PELONIS