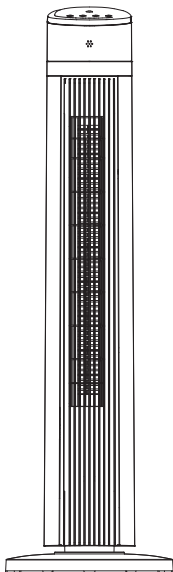


PELONIS

OWNER'S MANUAL

Tower Fan MODEL: PFT40A4AGB



READ AND SAVE THESE INSTRUCTIONS

Attention: Pictures in the IM are for reference only.

IMPORTANT SAFETY INSTRUCTIONS

CAUTION

Read Rules for Safe Operation and Instructions Carefully.

WARNING

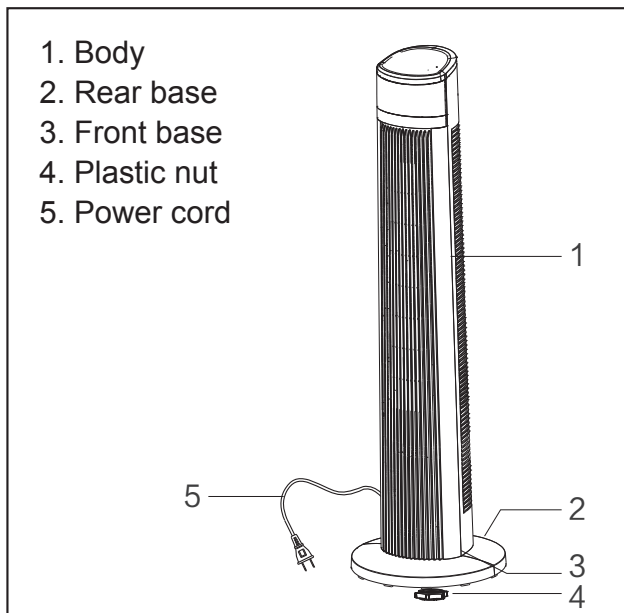
1. To reduce the risk of fire or electric shock, do not use this fan with any solid state speed control device.
2. This appliance has a polarized plug (one blade is wider than the other). To reduce the risk of electric shock, this plug is intended to fit in a polarized outlet only one way. If plug does not fit fully in the outlet, reverse plug. If it still does not fit, contact a qualified electrician. Do not attempt to modify this safety feature.
3. This appliance is not intended for use by persons (including children) with reduced physical, sensory or mental capabilities, or lack of experience and knowledge, unless they have been supervised or instructed related to use of the appliance by a person responsible for their safety.
4. Do not leave the fan running unattended.
5. Unplug or disconnect the appliance from the power supply before servicing.

READ AND SAVE THESE INSTRUCTIONS

RULES FOR SAFE OPERATION

1. The rules about cord and plug as below:
 - (1) This product employs overload protection (fuse). A blown fuse indicates an overload or short-circuit situation. If the fuse blows, unplug the product from the outlet. Replace the fuse as per the user servicing instructions (follow product marking for proper fuse rating) and check the products. If the replacement fuse blows, a short-circuit may be present and the product should be discarded or returned to an authorized service facility for examination and/or repair.
 - (2) Do not operate any fan with a damaged cord or plug. Discard fan or return to an authorized service facility for examination and/or repair.
 - (3) Do not run cord under carpeting. Do not cover cord with throw rugs, runners, or similar coverings. Do not route cord under furniture or appliances. Arrange cord away from traffic area and where it will not be tripped over.
2. Fan should be used under rated voltage.
3. Connect power after the fan is fully assembled.
4. Never insert fingers, pencils, or any other object through the guard when fan is running.
5. Unplug from outlet when not in use, when moving fan from one location to another, before putting on, or taking off parts, and before cleaning.
6. Be sure fan is on a stable surface when operating to avoid overturning.
7. DO NOT use fan in window. Moisture may create electrical hazard.

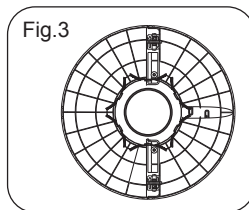
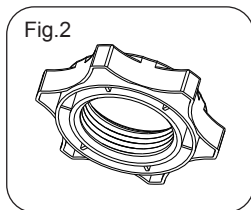
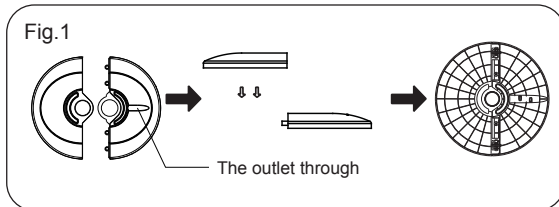
PART FIGURE



Note: All the pictures in this manual are for explanation purpose only. Any discrepancy between the real object and the illustration in the drawing shall be subject to the real subject.

ASSEMBLY INSTRUCTIONS

1. Take out the fan body and the spare parts from the box. Put the front base onto rear base and join them together. (See Fig. 1)
2. Unlock the plastic nut from the fan body.
3. Pass the power cord through the flute, then insert the fan body into the base. (See Fig. 3)
4. Fix the fan body on the base with the plastic nut. (See Fig. 2)



OPERATION INSTRUCTION

I. Remote Controller (Fig.4)

a. KEY INSTRUCTION

1. “” ON/OFF KEY

Press this key to switch on/switch off the fan.

2. “” SPEED KEY

When the fan started, press this key repeated, the fan will work with “1-2-3” circulatory.

3. “” MODE KEY

Press this key to select mode. The sequence is normal, natural, and sleep when this key being touched repeatedly or continuously. The light indicate mode state.

4. “” OSC/LOUVER KEY

After the fan has started, press this key to select oscillation mode. The lights on the display can indicate fan oscillation mode.

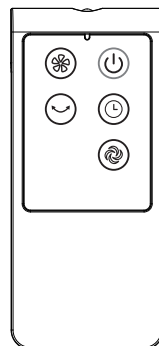


Fig.4

5. "⌚" TIMING KEY

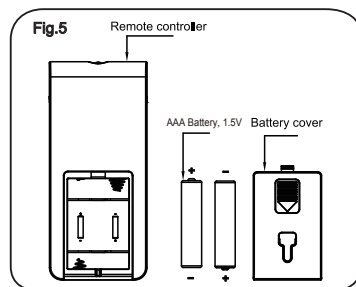
Press this timer key repeatedly to set the time for air delivery. Increase in increments up to "1-2-3-4-5-6-7-8-9-10-11-12-13-14-15" hours.

b. BATTERIES

(battery not included in the packaging)

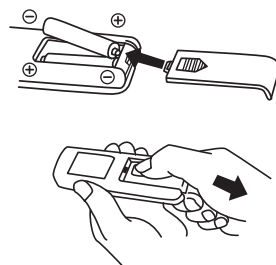
1. Slide the battery compartment Cover.
2. Insert the batteries, and make sure that the batteries are placed as shown in the Fig.5.
3. Slide back the battery cover.

NOTES: Use manganese or alkaline batteries of type "AAA". Do not use rechargeable batteries.



c. BATTERY WARNING AS BELOW

1. "Do not dispose of batteries in fire, batteries may explode or leak."
2. Do not mix old and new batteries.
3. Do not mix alkaline, standard (carbon-zinc) or rechargeable (nickel-cadmium) batteries.



d. REMOTE CONTROLLER OPERATION

Point the remote controller at the receptor on body of the fan and press the desired button. The remote controller will work at distances of up to roughly five meters and the angle of 30 degree included between right and left from the receptor.

The batteries must be removed from the remote controller before it is scrapped and that they are disposed of safely.

e. OVERHEAT PROTECTION OF THE MOTOR

The windings of the motor have a thermal-fuse that burns out and the fan switches off and temperature of the motor is no longer going up so that plastic parts of the fan don't subject to deformation so far so to be burned by the overheat if the motor is overheat for any unexpected reason.

II. Buttons on fan body / Panel indication (Fig.6)

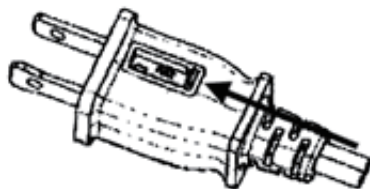
The buttons on the body such as ON/OFF, SPEED, MODE, TIMER, OSCILLATION have the same functions as those of the corresponding keys on the remote controller.



Fig.6

USER SERVICING INSTRUCTIONS

1. Grasp plug and remove from the receptacle or other outlet device. Do not unplug by pulling on cord.
2. Open fuse cover. Slide open fuse access cover on top of attachment plug towards blades.
3. Remove fuse carefully. Push the fuse from the other side to remove fuse.
4. Risk of fire. Replace fuse only with 2.5 Amp, 125 Volt fuse (provided with product.)
5. Close fuse cover. Slide closed the fuse access cover on top of attachment plug.
6. Risk of fire. Do not replace attachment plug. Contains a safety device (fuse) that should not be removed. Discard product if the attachment plug is damaged.



NOTE:

1. When you replace the fuse, please don't operate suddenly or overexert, or else the product will be damage or cause accident.
2. Confirm positioning is correct to avoid any complexity when operating.

CLEANING

1. Be sure to unplug the power cord from the outlet before cleaning.
2. Plastic parts should be cleaned thoroughly with clean water, mild soap and damp cloth or sponge.
3. Be sure not to get water or other liquid enter the inside of the motor.
4. Dry all parts completely before plugging into socket.

SERVICE & SUPPORT

In the event of a warranty claim or if service is required for this heater, please contact us at the following:

Toll Free: 1-866-646-4332

Email us at: customersupport@pelonis.com

For questions or comments, please write to:

Midea America Corporation

Customer Care Center

5 Sylvan Way Parsippany, NJ 07054

For your records, staple your sales receipt to this manual and record the following:

DATE OF PURCHASE: _____

PLACE OF PURCHASE: _____

(STAPLE SALES RECEIPT HERE)

**NOTE: PROOF OF PURCHASE IS REQUIRED FOR ALL
WARRANTY CLAIMS
PRINTED IN CHINA**

ONE (1) YEAR LIMITED WARRANTY

- Please read all instructions before attempting to use this product.

PELONIS warrants as limited herein to the original purchaser of retail that each new Pelonis Ceramic Tower Heater, shall be free of defects in material and workmanship for a period of one (1) year from the date of original purchase. This one (1) year warranty is limited to the heating elements, motor, and electric control circuit board.

In the event of malfunctions or failure of your Pelonis Ceramic Tower Heater, simply deliver or send the heater, postage prepaid along with PROOF OF PURCHASE, within the warranty period of one (1) year, to PELONIS. PELONIS reserves the right to inspect the claimed defective part or parts to determine if the defect or malfunction complaint is covered by this warranty. PELONIS shall, within sixty (60) days after receipt of the product, at its option, repair and/or replace the defective part or parts free of charge. This warranty shall only cover defects arising from normal usage. PELONIS assumes no responsibility whatsoever if the Ceramic Tower Heater should fail during the warranty period by reason of:

- Misuse, negligence, physical damage or accidents.
- Lack of maintenance (see instructions for proper maintenance).
- Repair by any unauthorized party during the warranty period.
- Damage caused by connection to an improper input voltage (see specification label on your heater).

PELONIS makes no further warranties or representations, express or implied except those contained herein. No representative or dealer is authorized to assume any other liability regarding the Ceramic Tower Heater. The duration of the implied warranty granted under State law, including warranties of merchantability and fitness for particular purpose are limited in duration should the duration of the express warranty grant it hereunder. PELONIS shall in no event be liable for direct, indirect, special or consequential damages.

Some states do not allow limitations on how long an implied warranty lasts, and/or the above limitations or exclusion may not apply to you. This warranty gives you specific legal rights and you may have other rights which vary from state to state.